

RÜHLE

Pioneer of
Food technology

Precise cutting up to 1.500 Kg/h



The multifunctional top performer

Above all the cube dicer cuts beautiful and therefore presents your food product in the proper light. Whether strips, cubes or portions, soft, hard or slightly frozen, the cube dicer offers a wide variety of cuts with precise results. With an hourly capacity of approximately 150 Kg for very thin strips and up to 1500 Kg for 30 mm goulash cubes the dicer can be, depending on the application, used for the trade or in an industrial environment.



Standard equipment

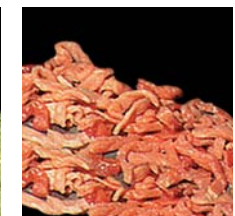
- ▶ Fully automatic
- ▶ Angled shaft
- ▶ Lateral pre-compacting by belt
- ▶ Toolbox
- ▶ Stabilisers for soft material
- ▶ Single foot undercarriage
- ▶ Pressure sensitive pre-compacting
- ▶ Multiplex-grid on roller bearings
- ▶ Infinite adjustment of forward feed 1-32
- ▶ Mechanical pressure system

Accessories

- ▶ Sectioning blade for bones
- ▶ Blade-sharpener in the toolbox
- ▶ Cheese-grids in different sizes
- ▶ Roulade kit
- ▶ More than 50 grids

Technical Data

| | | | |
|------------------------------|--------------------|---------------------|-------------------|
| Machine height | 1300 mm | Section length | 1 - 32 mm |
| Machine length | 1200 mm | Sections per min. | 150 |
| Machine width | 790 - 1500 mm | Cutting temperature | -5 °C bis +80 °C |
| Connected load | 2,5 kW | Cutting output max. | 1500 Kg/h |
| Machine weight | 350 kg | Standard grid-sizes | 5, 10, 20, 40, 60 |
| Size of shaft (W x H x L) | 100 x 100 x 350 mm | | 6, 12, 24, 60 |
| Subject to technical changes | | | 7, 15, 30, 60 |



Without effort best cutting results

For quite some time we have asked ourselves why a small dicer of cubes and strips shouldn't be able to cut more than one batch of product independently, only to find out that the cost factor was the stumbling block. Now we have found a solution and developed our brand new cube dicer. The cuts are more beautiful and more accurate than ever. Moreover it turned out to be a handy, fully automated machine with a reasonable price and it is very easy to operate.



Your advantages:

- ▶ Fully automatic
- ▶ Perfect cut
- ▶ Higher performance
- ▶ Compact size



Automatic chamber filling

Two conveyor belts with non-slip links hold every product tight and transport it safely to the process chamber. Through a simple weight shift of the upper clamp belt it is possible to select variably between hard clamping and soft clamping. A pressure sensitive and adjustable belt drive makes sure that the process chamber is filled properly and that the filling process stops at the right moment. It is better than filling by hand, for all products.



Chamber shutter with cutter

A patented cutter moves during the shutting process in fast steps through the overhanging product. This way the product stays in the ideal cutting position without being shifted as it would happen with a knife that is pushing. Furthermore the cut happens along the complete chamber and not only at the end of the chamber shutter where the cutting edge is positioned. This saves power and guarantees beautiful cubes.



Precompacting

The filling of the chamber from the side proceeds until a certain pressure by precompacting the product is reached. This pressure is variably adjustable and is therefore adaptable to all types of product. After the chamber has been closed the precompacting plunger moves forward against the stationary knife. Now the cutting process with the evenly compacted product starts. These way identical cubes are produced.



The cutting tool

Serrated knives, which create lots of cutting action through a double-pull movement, are led through a solid plastic grid frame which has very good sliding properties. This is supported by stabilisers inside the grid frame and a process chamber in a slanted position. A cutting knife moves with little pressure and lots of pull across the grid frame. The result is a smooth cube surface without being frazzled at the edges.



Operation

The three-piece grid is assembled in no more than 5 seconds and is positioned in the machine with a self-locking mechanism in a further 3 seconds. The clamp belts, like everything else, can easily be removed and cleaned. Control handles, which are understood immediately, were installed deliberately despite the use of a PLC control.



Continuous operation quality

Nearly all technical components were field tested over many years and have been operating during continuous operation in our other dicer models. That is why this small, fully automated machine can work in shift operation. The maintenance-friendly design of the machine makes fast maintenance by an engineer even under conditions of continuous load possible. The purely mechanical and therefore oil-free operating machine pushes up to 1.000 Kg of load through the chamber without any problems.

RÜHLE



Rühle GmbH
Beim Signauer Schachen 10
D-79865 Grafenhausen

Phone: +49 7748-523-0
Fax: +49 7748-523-8500

E-Mail: infoline@ruehle-hightech.de
Internet: www.ruehle-hightech.de